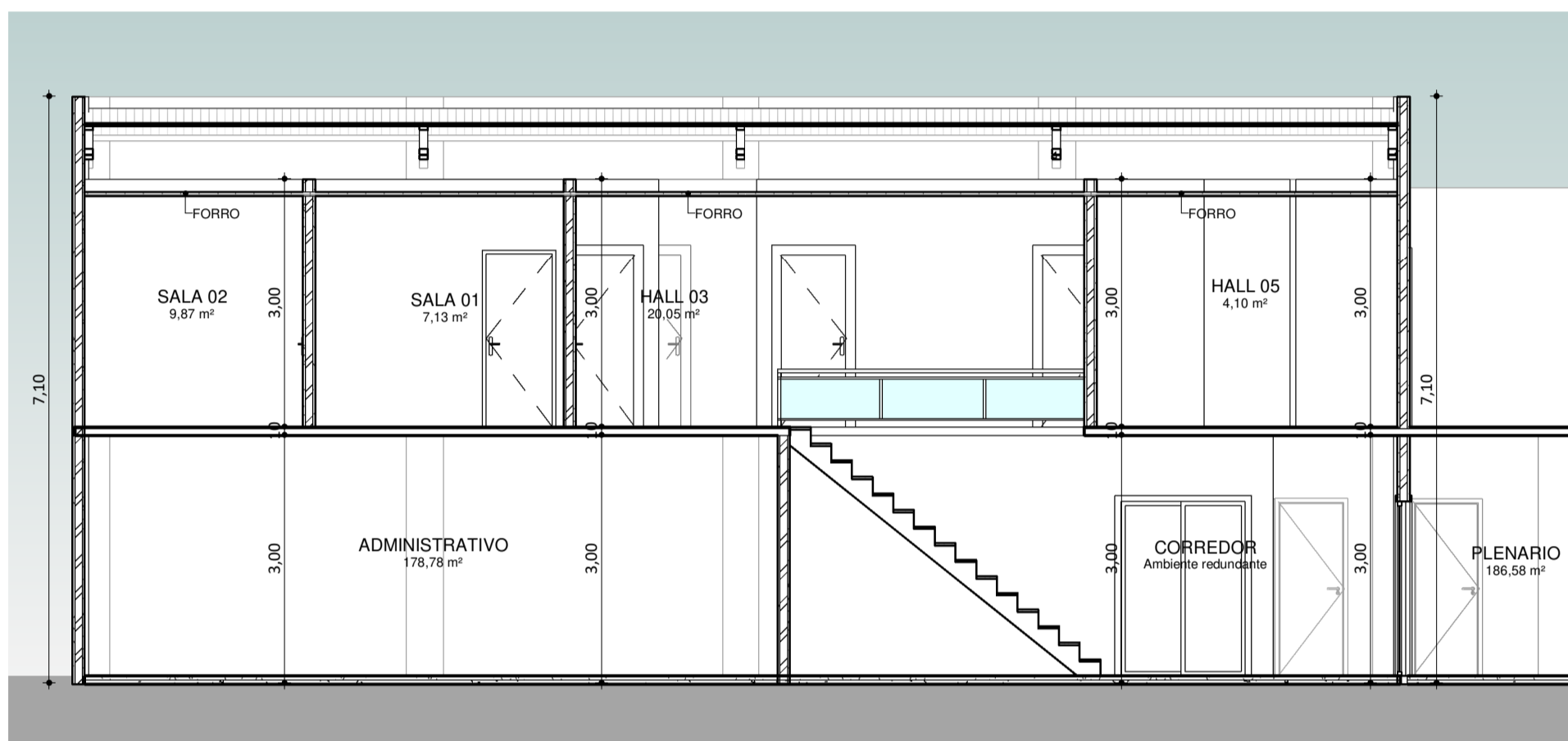
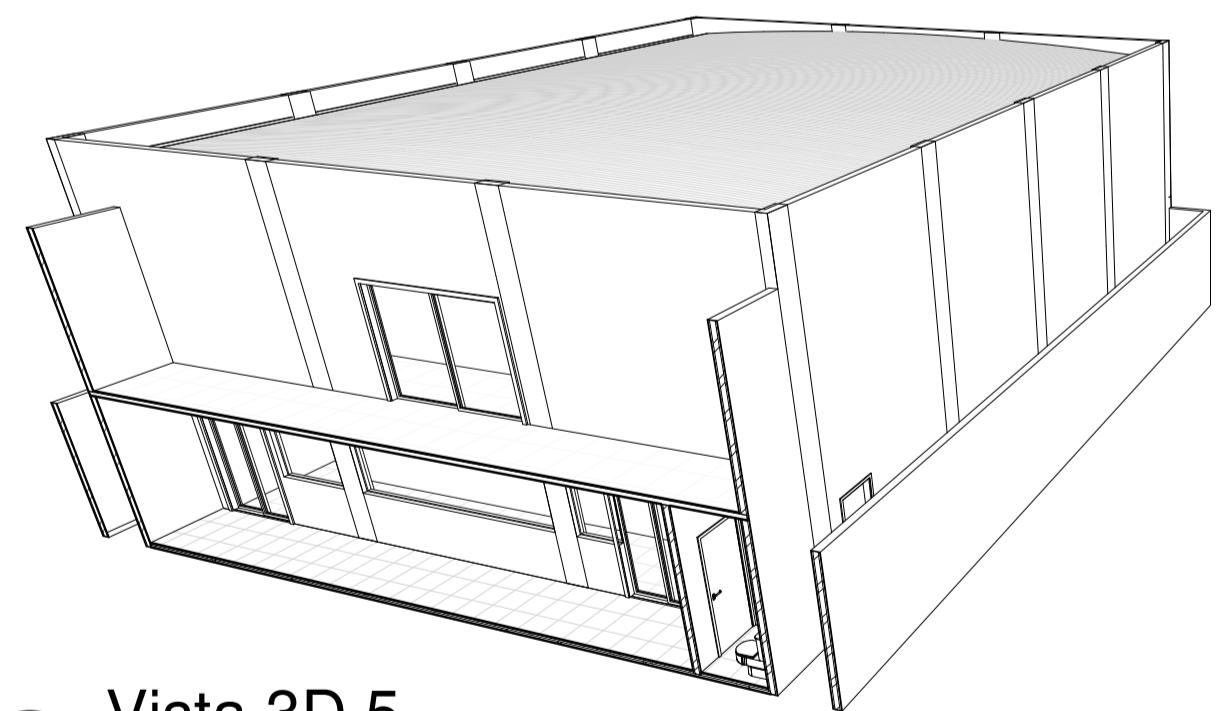


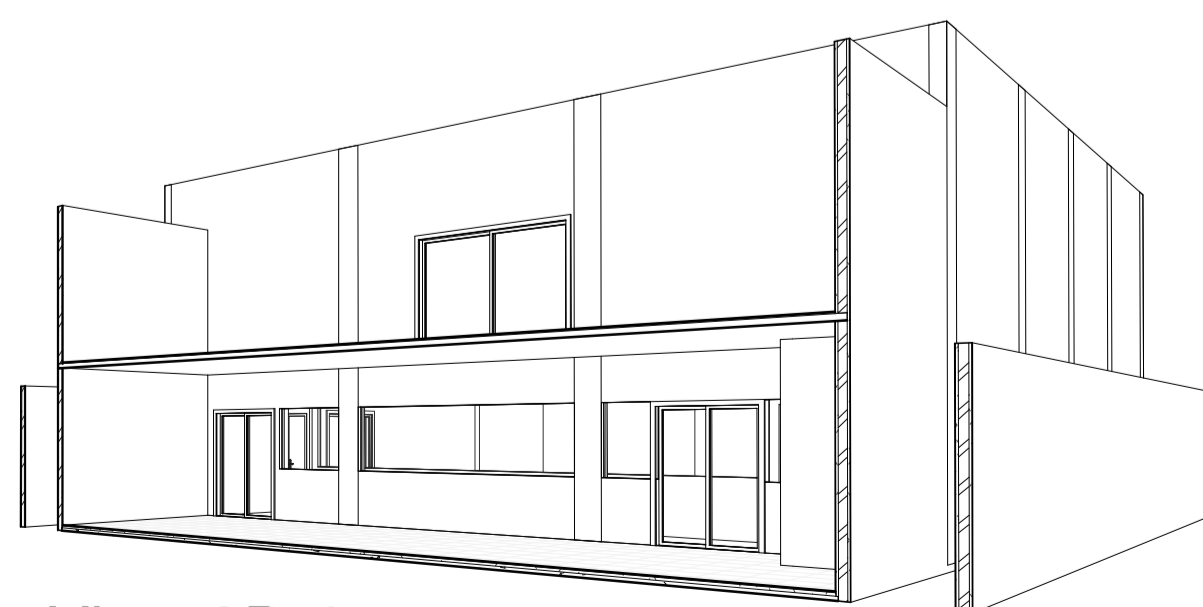
2 CORTE LONGITUDINAL 3
1 : 75



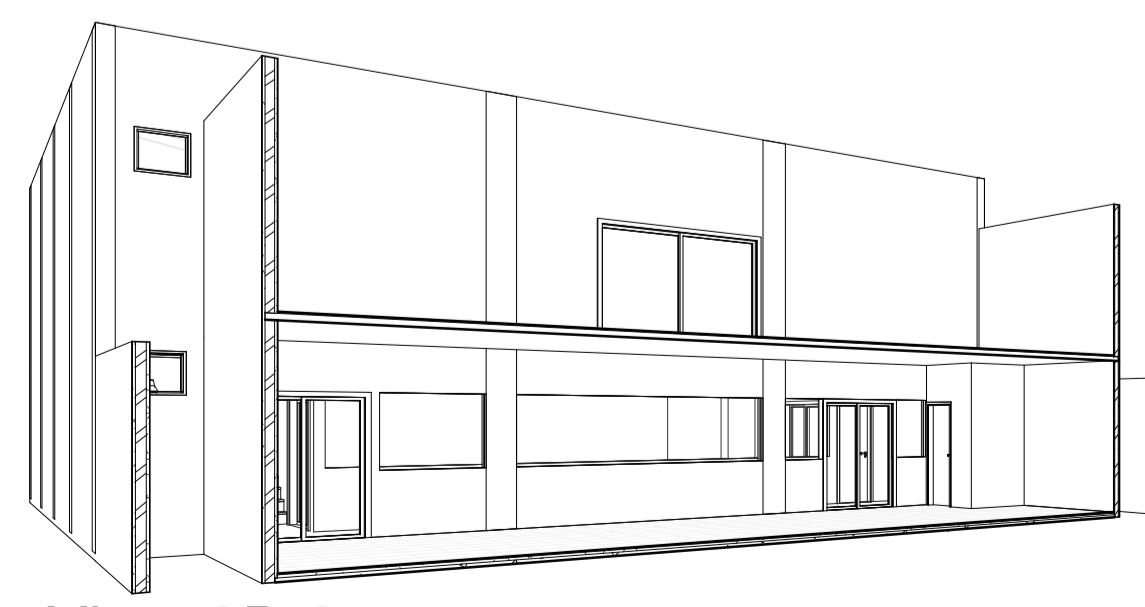
1 CORTE LONGITUDINAL 1
1 : 75



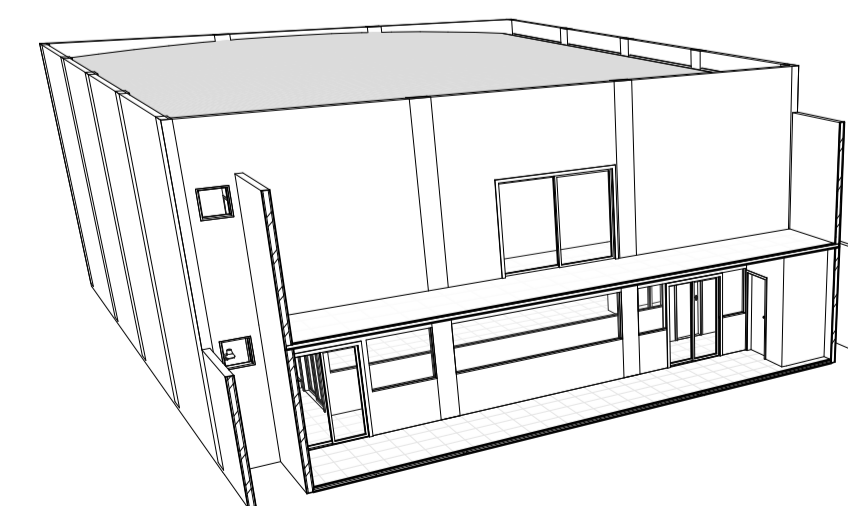
6 Vista 3D 5



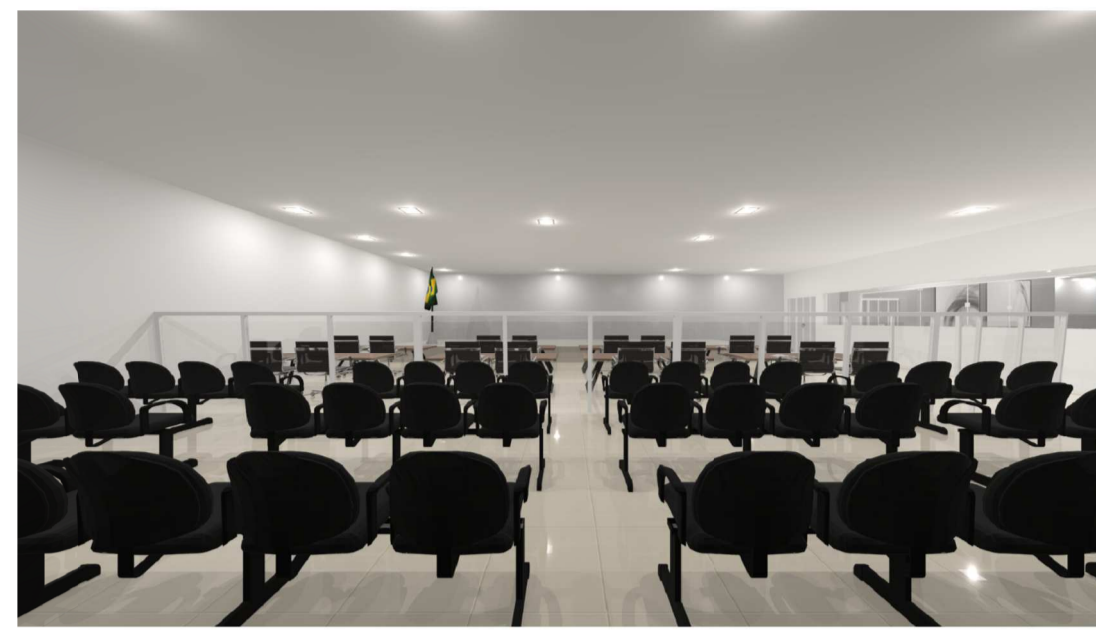
5 Vista 3D 4



4 Vista 3D 3



3 Vista 3D 2



IMAGENS PLANARIO



IMAGENS PLANARIO



IMAGENS PLANARIO



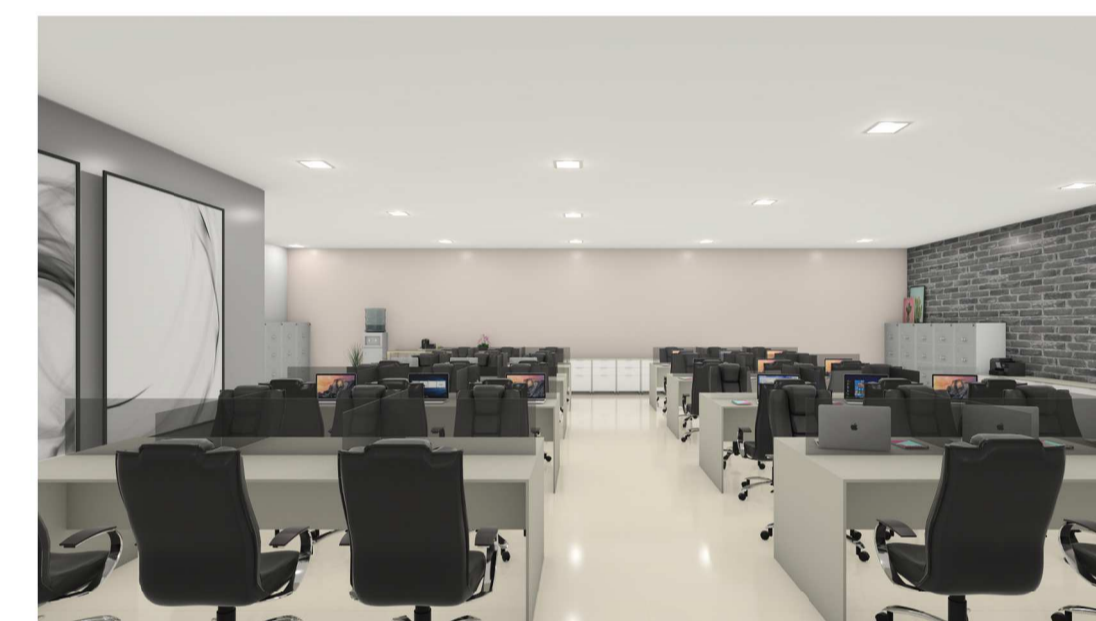
IMAGENS PLANARIO



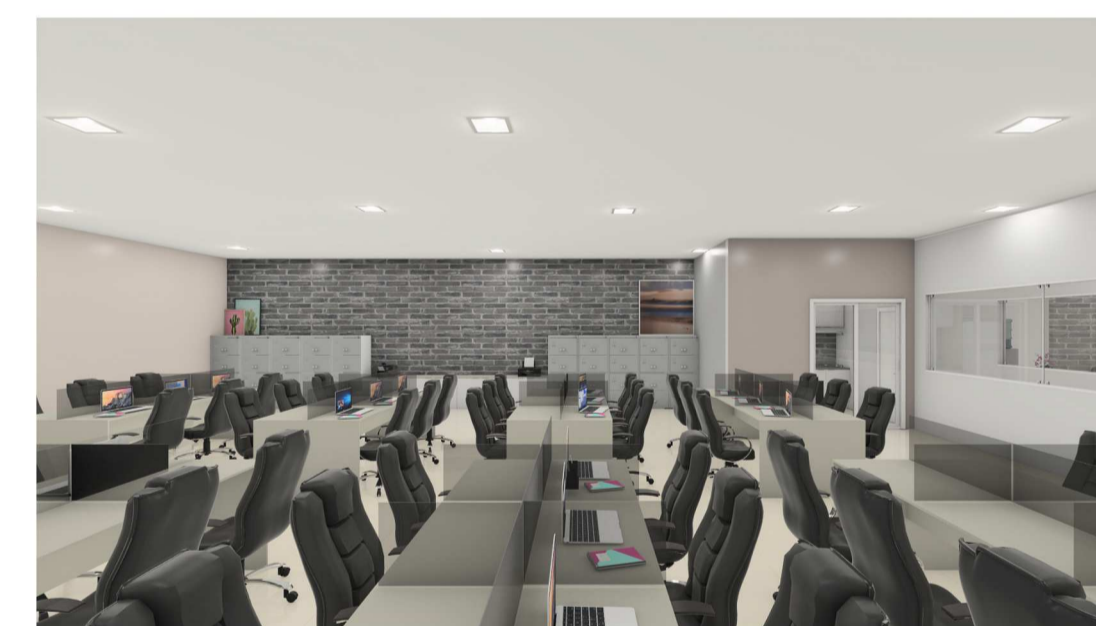
IMAGENS ADMINISTRATIVO



IMAGENS ADMINISTRATIVO



IMAGENS ADMINISTRATIVO



IMAGENS ADMINISTRATIVO



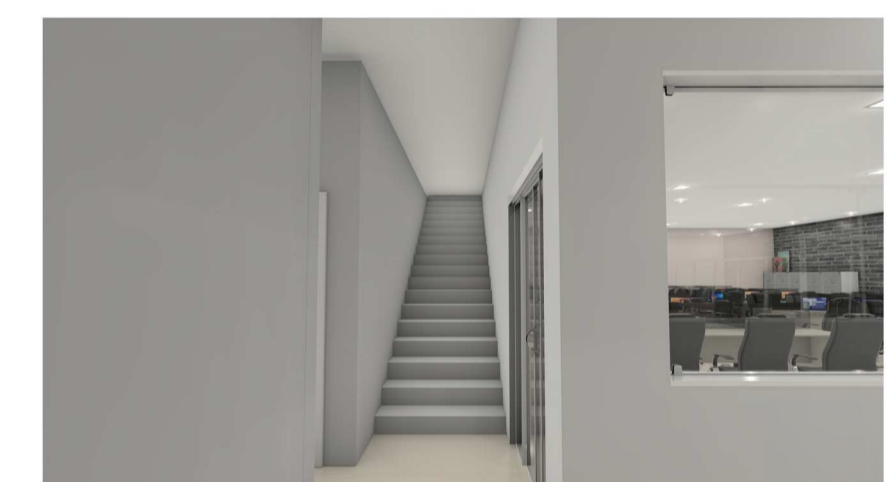
IMAGENS ADMINISTRATIVO



IMAGENS ADMINISTRATIVO



CORREDOR



CORREDOR

PREFEITURA:	CREA:
IN.S.S.	BOMBEIROS:
AUTOR DO PROJETO: Marcus Marques Cohen CREA/PA 17.2057-0/PA RESP. TÉCNICO: Marcus Marques Cohen CREA/PA 17.2057-0/PA PROPRIETÁRIO: Câmara Municipal de Itaituba CNPJ: 10.221.28/0001-66	
ASSUNTO: PLANTA BAIXA TERREJO, COBERTURA, CORTES TRANSVERSAIS E LONGITUDINAIS, FACHADA PRINCIPAL, SITUAÇÃO E LOCALIZAÇÃO E PERSPECTIVA 3D ENDEREÇO: Avenida Getúlio Vargas, nº 419, Bairro centro, Itaituba-Pa	
PROJETO: ARQUITETÔNICO	DESENHO CAD: ATILSON SANTOS CEL.: (93) 99131-0780
REFERÊNCIA: PLANTA BAIXA TERREJO, COBERTURA, CORTES TRANSVERSAIS E LONGITUDINAIS, FACHADA PRINCIPAL, SITUAÇÃO E LOCALIZAÇÃO E PERSPECTIVA 3D	ESCALA: INDICADA
DATA: 29/05/2021	PRANCHA: 2/2
ORÇAMENTO: OXX(93) 99146-9272/98113-8773	ÁREA CONSTRUIDA: 469,15m²

